



HALLOWEEN CORNER

Lower Primary

OXFORD
UNIVERSITY PRESS



Activity 1

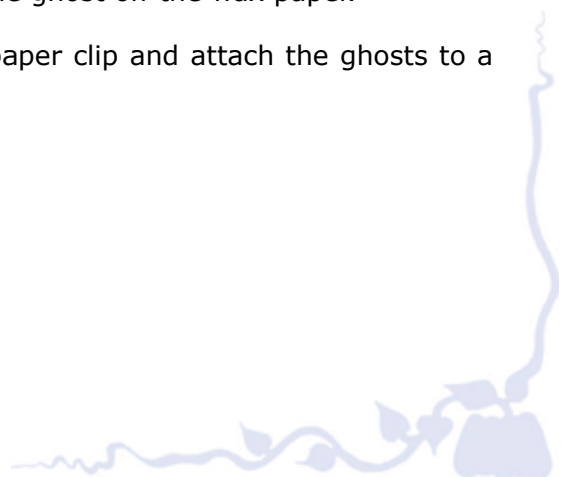
Glue Ghosts

You will need:

- white liquid glue
- A5 piece of wax paper (baking paper) for each child
- one copy of ghost template on Worksheet 1 for two children
- two black buttons or beads for each child
- pencils
- paper clips
- string
- one copy of Worksheet 2 for each child (optional)

Instructions:

1. Distribute copy of the ghost template from Worksheet 1 and a piece of wax paper to your students.
2. Ask them to put the ghost template under the wax paper and go over the outline of the ghost in pencil so that there is an outline of a ghost on the wax paper.
3. The children fill in the ghost outline with glue, starting from the outside line and moving to the centre.
4. When they have finished with the glue the children put the buttons/beads into the glue to make the ghosts' eyes.
5. Put the glue ghosts somewhere to sit for two or three days while the glue dries.
6. When the glue has dried carefully pull the glue ghost off the wax paper.
7. Make a hole in the top of the ghost with a paper clip and attach the ghosts to a piece of string to decorate the classroom.





HALLOWEEN CORNER

Lower Primary

OXFORD
UNIVERSITY PRESS



Optional extension activity

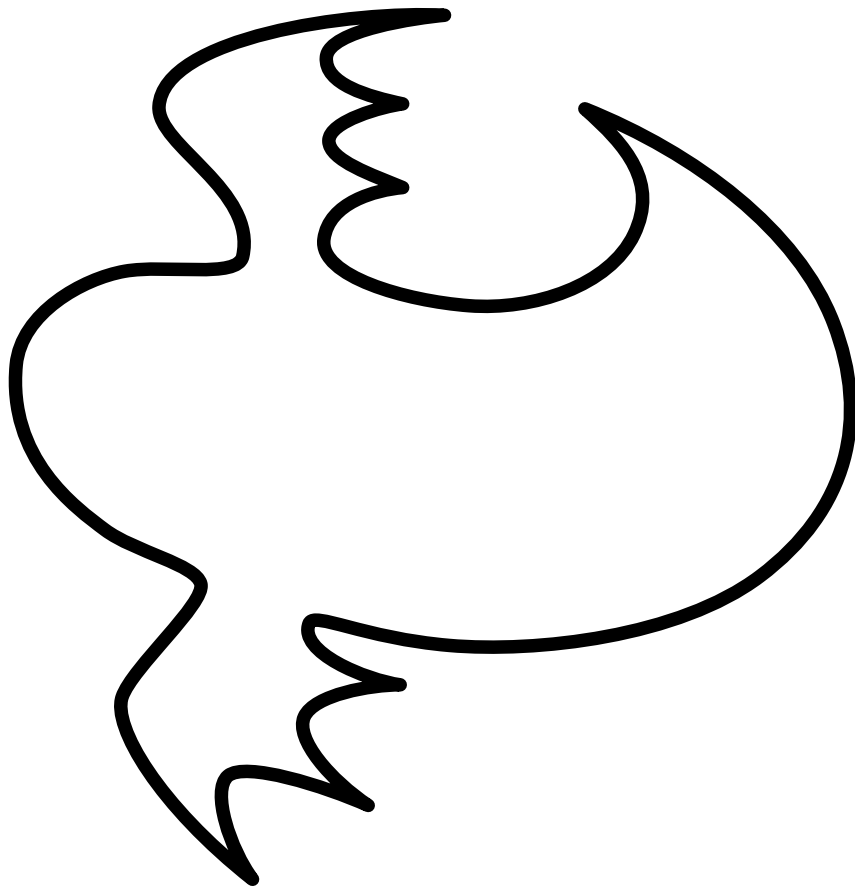
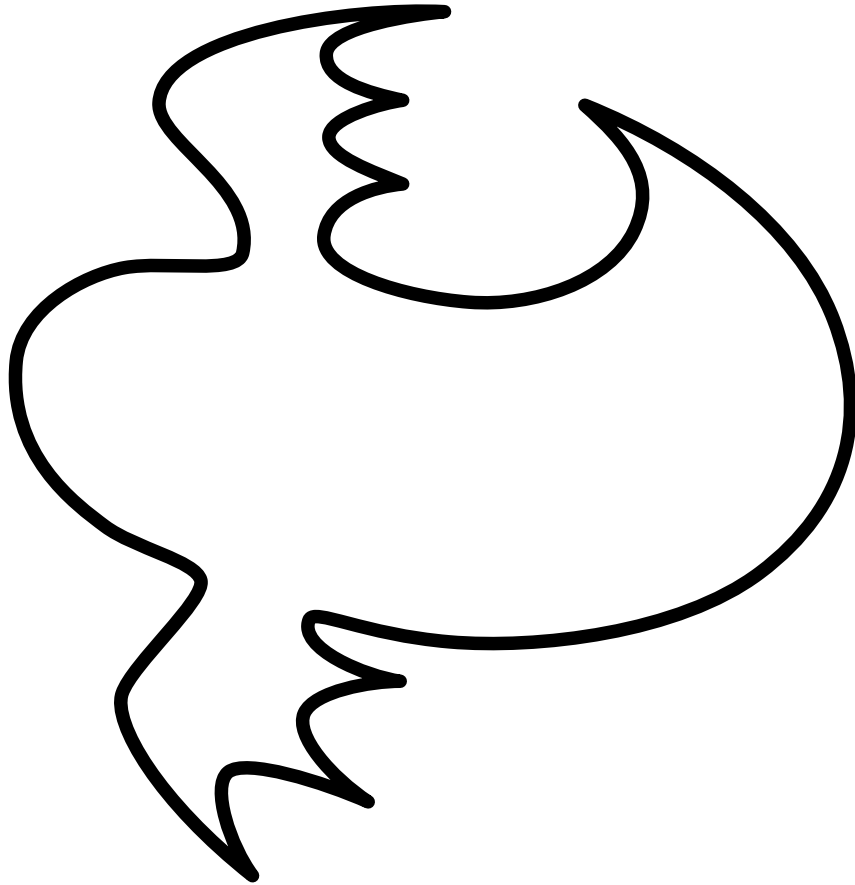
Monster silhouettes and word shapes

Distribute Worksheet 2, explain that they must identify the Halloween character or object from the silhouette and write the word in the word shape. When the children have finished they can make their own word shapes of Halloween words for the other children to guess.

Answer key:

1. skeleton
2. spider
3. witch
4. bat
5. cat
6. ghost

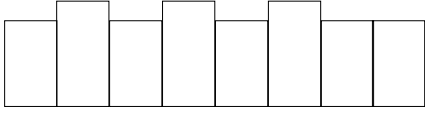




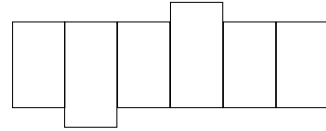
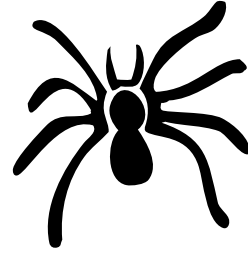
WORKSHEET 2

HALLOWEEN CORNER

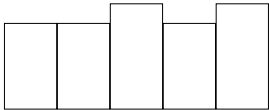
1.



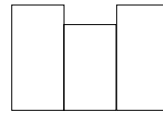
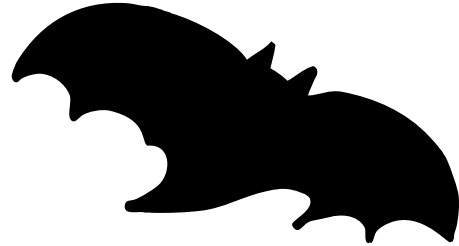
2.



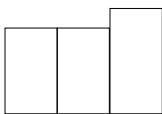
3.



4.



5.



6.

